



Dalian Grosper

No.287 Zhuangda Road Lingang  
Industrial Zhuanhe China  
Zip Code: 116400  
TEL: 0411-88255559  
ray@bjgaochang.com  
www.gflaker.com

## Steam Corn Flakes Solution V24.1



Grosper



**Eqpt. Name: Elevator**

**Eqpt. Type: Material cleaning process**

**Process Code:C01,C09,F01,P01**



**Eqpt. Name: Vibration cleaning machine**

**Eqpt. Type: Material cleaning process**

**Process Code:C02**



**Eqpt. Name: Cycle winnowing machine**

**Eqpt. Type: Material cleaning process**

**Process Code:C03**

**Eqpt. Brand: COFCO Maosheng**



**Eqpt. Name: Magnet**

**Eqpt. Type: Material cleaning process**

**Process Code: C04**



**Eqpt. Name: Stone remover**

**Eqpt. Type: Material cleaning process**

**Process Code: C05**

**Eqpt. Brand: COFCO Maosheng**



**Eqpt. Name: Cyclone**

**Eqpt. Type: Material cleaning process**

**Process Code:C06**



**Eqpt. Name: Hot water tank**  
**Eqpt. Type: Material Soaking process**  
**Process Code: W01**



**Eqpt. Name: Screw Conveyor**  
**Eqpt. Type: Material Soaking process**  
**Process Code:W02,F02**



**Eqpt. Name: Distributor**  
**Eqpt. Type: Material Soaking process**  
**Process Code:W03**



**Eqpt. Name: Soaking tank**  
**Eqpt. Type: Material Soaking process**  
**Process Code:W04**



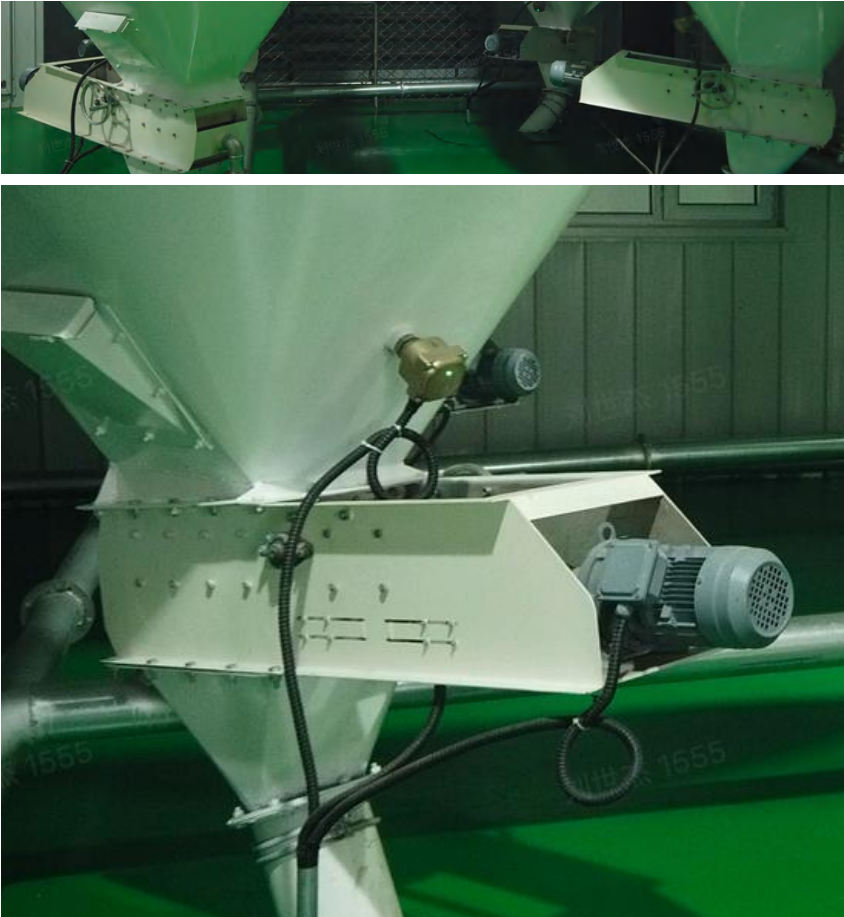
Eqpt. Name: Manual electric water retaining plate  
Eqpt. Type: Material Soaking process  
Process Code:W06



Eqpt. Name: Air closer  
Eqpt. Type: Steam--flaking--drying and cooling process  
Process Code:F03



**Eqpt. Name:** Manual electric water retaining plate  
**Eqpt. Type:** Material Soaking process  
**Process Code:**W06



**Eqpt. Name:** Air closer  
**Eqpt. Type:** Steam--flaking--drying and cooling process  
**Process Code:**F03



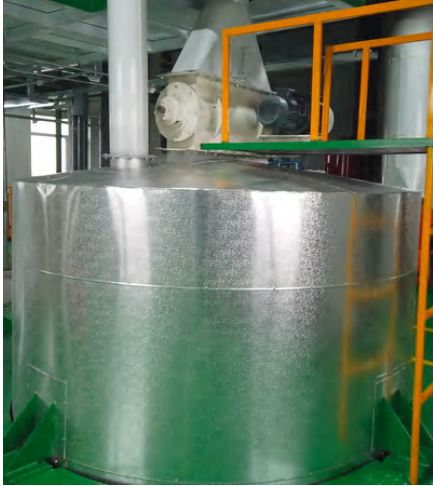


Eqpt. Name: Steam chest

Eqpt. Type: Steam--flaking--drying and cooling process

Process Code:F04

*Global cumulative sales exceeded 100 units*



**Eqpt. Name: Flaker**

**Eqpt. Type: Steam--flaking--drying and cooling process**

**Process Code:F07**



**Eqpt. Name: Flaker**

**Eqpt. Type: Steam--flaking--drying and cooling process**

**Process Code:F07**



**Eqpt. Name: Moisutre absorption fan**

**Eqpt. Type: Steam-flaking-drying and cooling process**

**Process Code:F08**



**Eqpt. Name: Off-wind feeder**

**Eqpt. Type: Steam-flaking-drying and cooling process**

**Process Code:F09**



**Eqpt. Name: Horizontal dryer and cooling box**  
**Eqpt. Type: Steam-flaking-drying and cooling process**  
**Process Code:F10**



**Eqpt. Name: Hot air fan**

**Eqpt. Type: Steam-flaking-drying and cooling process**

**Process Code:F11**



**Eqpt. Name: Cold Air fan**

**Eqpt. Type: Steam-flaking-drying and cooling process**

**Process Code:F12**



**Eqpt. Name: Heat exchanger**

**Eqpt. Type: Steam-flaking-drying and cooling process**

**Process Code:F13**



**Eqpt. Name: Single cylinder cleaning screen**

**Eqpt. Type: Finished product-bulk process**

**Process Code:F12**

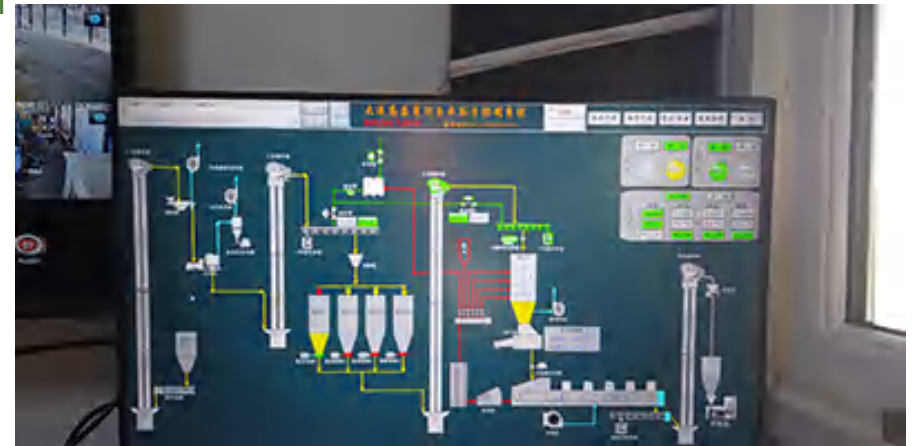
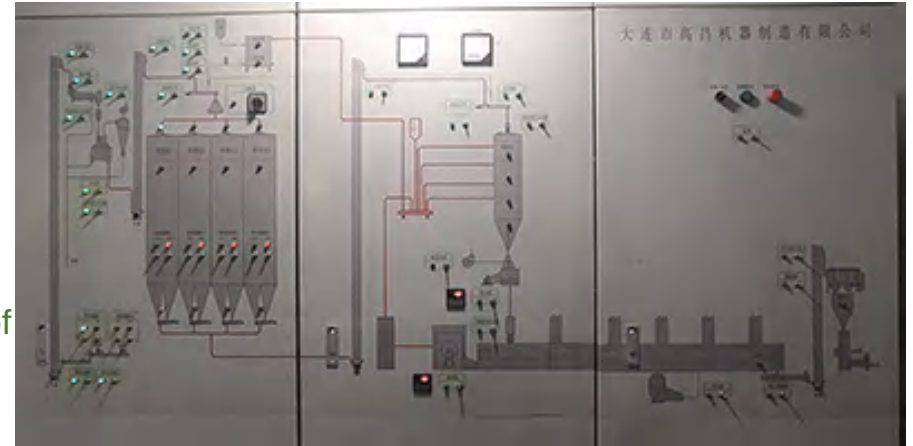


**Eqpt. Name: Automatic Control System**

**Eqpt. Type: Automatic Control System**

**Process Code: G01**

- Operating system: The automatic remote control system of the steam flaked corn production line jointly developed by Grosper and Siemens. The main page displays the process flow, can display the operation status of each motor, display the material level and the temperature of key equipment.
- Equipped with three control cabinets and a schematic diagram of the process flow.
- The control cabinet is equipped with a local manual control system, which can be exchanged and controlled with the automatic remote control system (computer in the central control room), and can control the start and stop of each motor on the control cabinet to ensure the normal operation of the equipment.
- Electrical configuration: The main component PLC control module adopts Siemens brand. The electrical components are all Chint brand.
- The 55kw fan motor is started by frequency conversion.
- Flaker motor 110kw adopts soft start.



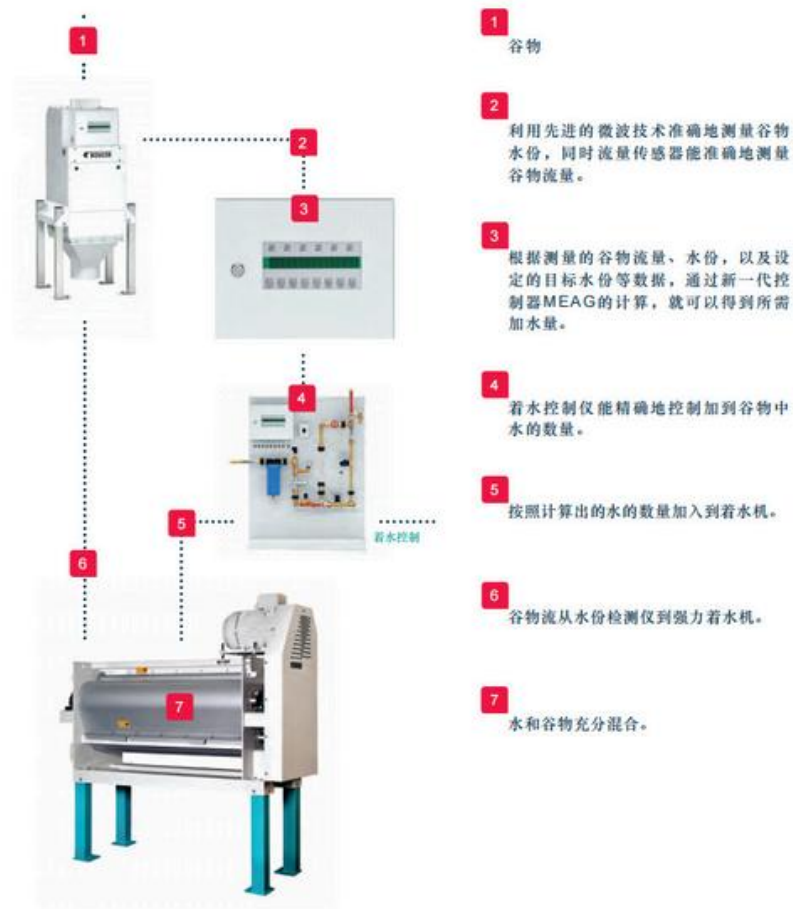


**Eqpt. Name: Moisture control system(Optional)**

**Eqpt. Type: Grouped Equipment**

**Process Code: W02**

- Raw grain enters the controller. Use advanced microwave technology to accurately measure the moisture content of corn, and the flow sensor can accurately measure the flow of corn.
- According to the measured grain flow, moisture, and the set target moisture and other data, through the calculation of the new generation controller MEAG, the required amount of water can be obtained.
- The water impingement controller can accurately control the amount of water added to the corn. According to the calculated amount of water, it is counted into the water dispenser.
- The corn flows from the moisture detector to the strong water machine, so that the water and corn are fully mixed.



**Eqpt. Name: Single Cylinder Cleaning Screen**

**Eqpt. Type: Grouped Eqpt.**

**Process Code: P02**



**Eqpt. Name: Packing Scale**

**Eqpt. Type: Grouped Equipment**

**Process Code: P04**



## Eqpt. Name: Platform + Chute

### Eqpt. Type: Installation Materials

#### Process Code: G04

- The installation materials are mainly used for hoist maintenance platform, equipment connection pipes, wind net, etc.
- Adopt double-layer hoop-lined wear-resistant chute to convey materials .The slide pipe for conveying material is made of 2.5mm carbon steel lined with 2.0mm wear-resistant manganese steel plate, and the part for conveying impurities is made of 2.5mm carbon steel. Clamp connection is adopted.
- The grain passing through any chute or slope can flow by gravity, the minimum slope angle for dry grain is 40°, the minimum slope angle for impurities is 55°, and the support structure of the chute is stable.
- After using for a certain period of time, it can be fixed again through the rotation direction of the clamp, and the slide tube is durable and wear-resistant, and can be used many times.



## Cables And Trays: Cable National Standard, Galvanized Bridge.

Eqpt. Type: Supporting Materials

Process Code: G03

- Use galvanized plate bridge .Color separation of power line and control line.
- Use national standard copper core cable.

